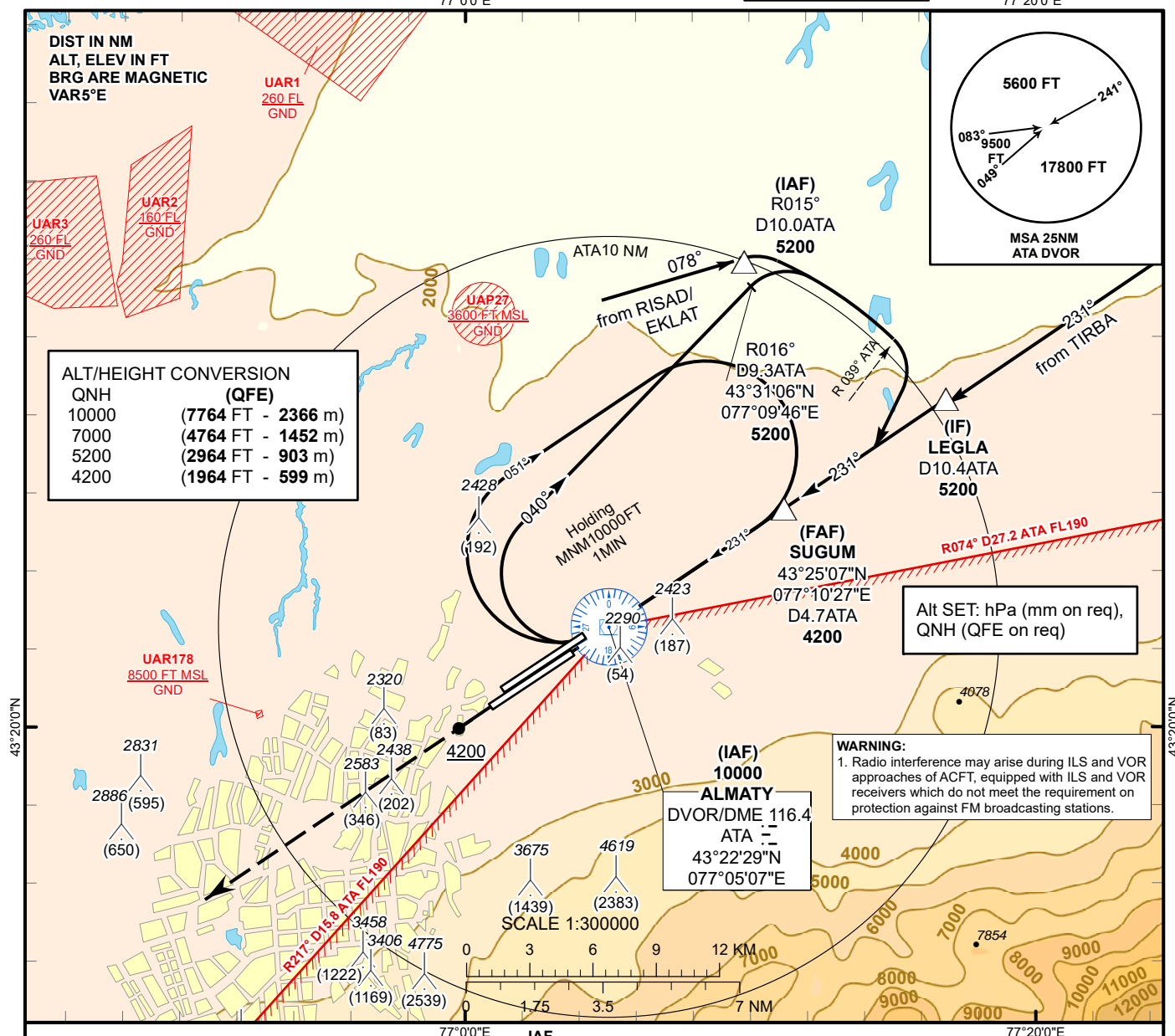


INSTRUMENT
APPROACH
CHART - ICAO

AERODROME ELEV **2238 FT**
HEIGHTS RELATED TO
THR RWY 23L - ELEV **2236 FT**

ALMATY APPROACH 118.3
ALMATY RADAR 126.8
ALMATY TOWER 119.4
ALMATY ATIS (EN) 129.8
ALMATY ATIS (RU) 135.1

ALMATY
VOR/DME
RWY 23L

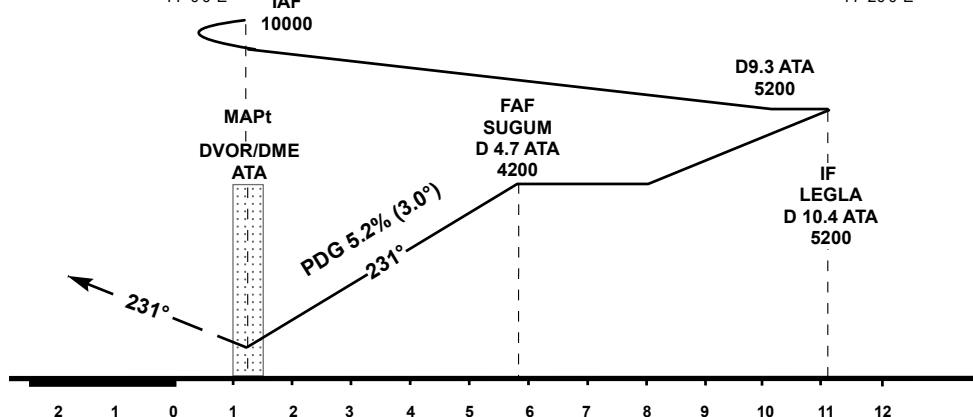


MISSSED APPROACH

Climb on track 231° to 5200.
After passing 4200 radar vectoring
will be provided.
RADIO FAILURE:
In case of RCF climb on track 231°
to 5200 FT, turn RIGHT to ATA,
but not earlier than 6.5NM ATA.
Climb to 10000FT (not below) to ATA
and join to holding pattern.

TRANSITION ALT
10000

ELEV 2236
THR RWY 23L



Aircraft Category		A	B	C	D	DIST to THR	NM	1	2	3	4	5	5.9
Straight-in Approach OCA/H						DME ATA	NM	-0.2	0.8	1.8	2.8	3.8	4.7
	VOR/DME	2660(440)	2660(440)	2660(440)	2660(440)	ALTITUDE	FT	2608	2929	3252	3576	3903	4200
						HEIGHT	FT	372	693	1016	1340	1667	1964
Aerodrome Operating Minima MDH ft x RVR(CMV)	VOR/DME					GS	Kt	80	100	120	140	160	180
						Desc.Rate (5.2%)	ft/min	420	530	630	740	840	950
						FAF-MAPt (4.7 NM)	min:sec	3:15	2:49	2:21	2:02	1:46	1:34

ALMATY
VOR/DME

AERONAUTICAL DATA TABULATION

VOR/DME approach to RWY23L from ATA DVOR/DME, LEGLA	
Fix/point	Coordinates
ATA DVOR/DME	43° 22' 29.4"N 077° 05' 07.0"E
ATA D4.7 (FAF SUGUM)	43° 25' 07.3"N 077° 10' 26.7"E
LEGLA (IF) ATA 10.4	43° 28' 25.5"N 077° 16' 54.3"E
R 015° D10.0 ATA (IAF)	43° 31' 55.5"N 077° 09' 49.0"E
THR RWY 23 L	43° 21' 48.52"N 077° 03' 44.44"E
Final approach descent angle is 3°	